

# **MENOMINEE RANGE HISTORICAL FOUNDATION NEWS – SPRING 2018**

[www.menomineerangehistoricalfoundation.org](http://www.menomineerangehistoricalfoundation.org)

Beginning Monday, June 4, our three museums will be open for the season to area residents and tourists alike. Hopefully you and your family will find time to visit the museums over the summer and encourage others from the area and visitors to see the outstanding displays located in each museum.

## **WEBSITE**

For the past several years the Foundation has maintained a website which continues to prove helpful in tourists finding us. The website has been updated to enable people to use their cellphone to find us through Google. The site is readily accessible by searching on line using any of the museum names or by using the address located at the top of this page.

## **MENOMINEE RANGE HISTORICAL MUSEUM**

Beginning Tuesday, June 5, the Menominee Range Historical Museum, located in the former Carnegie Public Library building at 300 East Ludington Street, will be open Tuesday through Friday from 11 a.m. to 3 p.m. during the summer. Members of the Iron Mountain-Kingsford Women's Club volunteer to keep this museum open, and additional help is always needed and welcomed. Call Dianne at 774-4276 (museum), 774-1086 (Cornish Pump) or 828-1822 if you can help.

During the week of May 14 to 18 fourth grade school tours will be held. Assistance from the Iron Mountain-Kingsford Women's Club and Foundation Board members provide the necessary guides, but additional assistance is welcome.

## **CORNISH PUMPING ENGINE & MINING MUSEUM**

Beginning Monday, June 4, the Cornish Pumping Engine & Mining Museum, located at 300 Kent Street, will be open Monday through Saturday from 9 a.m. to 5 p.m. and Sunday from noon to 4 p.m. Hours are modified in September and October. The telephone number is (906) 774-1086.

Over the past several seasons the cases in the Pump Room have been updated and enhanced, a working model of the Cornish Pumping Engine has been added and a pictorial display of the Iron

Mountain Ford Motor Company Plant, located in Kingsford, has been added, together with some artifacts.

## **WORLD WAR II GLIDER & MILITARY MUSEUM**

Beginning Monday, June 4, the World War II Glider & Military Museum, located at 302 Kent Street, will be open Monday through Saturday from 9 a.m. to 5 p.m. and Sunday from noon to 4 p.m. Hours are modified in September and October. The telephone number is (906) 774-1086.

At the January Board meeting, Treasurer Guy Forstrom presented the Foundation with an original Army-Navy "E" Award banner which he personally purchased to enhance the exhibit. An informational sign 24 inches wide and 30 inches tall detailing the history of the "E" Award was also added, funding donated by the Friends of the Museum.

Another new 6-foot by 4-foot wall exhibit provides information on Sgt. Oscar Godfrey Johnson, Jr., one of two winners of the Medal of Honor from Michigan's Upper Peninsula. The story of his bravery and valor during World War II exemplifies true heroism at the face of battle. Johnson was raised in Foster City, Michigan, on his parents' dairy farm.

The Iron Mountain V.A. Hospital was named the Oscar G. Johnson VA Medical Center on October 1, 2008.

The display was developed by Clyde Unger and Bill Cummings. A mini-grant from the Dickinson County Area Community Foundation provided some of the funding for the project. The project was designed by Baker Sign.

Clyde Unger also completed a pictorial display explaining the World War II Clark CA-1 Airborne Bulldozer's role during the war.

During the late fall and early winter, Trustee Jim Hartwell installed LED lighting in the ceiling to replace the fixtures originally coming from the Kingsford High School Gymnasium. A grant from the Dickinson Area Community Foundation funded the majority of this project.

## **THE DRY AND ARCHIVES**

# MENOMINEE RANGE HISTORICAL FOUNDATION NEWS – SPRING 2018

[www.menomineerangehistoricalfoundation.org](http://www.menomineerangehistoricalfoundation.org)

During the late fall and winter, the Foundation moved the archives into its new quarters in the dry building. Manager Dianne Castelaz-Chiapusio enjoyed her first winter with comfortable working conditions. The telephone number is (906) 828-1822.

Those wishing to research in the archives must set up an appointment with Dianne. As a museum staff person familiar with the collection must assist with the research, there is a \$10 per hour fee, prorated by 15-minute intervals for this service.

The Foundation Board is working on a long-range plan to establish the Menominee Range Historical Museum in the dry building. Barrier-free access and ample parking would make this a wise move and facilitate operations with all three museums on the same campus.

A preliminary design has been approved by the Foundation Board, subject to modifications. The vast majority of the collection currently housed in the former Carnegie Public Library building will be moved to the dry.

Some collections, such as the mining displays, will be absorbed in the Cornish Pumping Engine & Mining Museum. Logging and lumbering exhibits will possibly be developed in a portion of the Cornish Pumping Engine & Mining Museum where the former projection room was located.

Some collections which don't directly fit with the museum's scope will probably be maintained as rotating exhibits.

Funds for this comprehensive project are being sought and donations are welcome. Once the plan is finalized and funds become available, the construction of the new display area in the dry building can begin.

The displays in the Menominee Range Historical Museum will remain in place while construction

## **BOARD OF GOVERNORS**

Board members include: Bill Cummings, president and historian; Jim Hartwell, vice-president; Kathie Fayas, secretary; Guy Forstrom, treasurer; Pam Edens, Jim Hartwell, Bob Johnson, Dave Pelto, Jan Reynolds, Roger Scott, and Joe Warren, trustees.

## **FRIENDS OF THE MUSEUM**

The Menominee Range Historical Society was reorganized as Friends of the Museum and beginning in 1975 was led by President Janet Reynolds. As volunteers, donating a tremendous amount of time, hard work and fund raising, Friends of the Museum was able to contribute \$137,500 for various projects throughout the years. The WWII Glider and Military Museum has been, and remains, their main focus and the group is to be commended for their efforts. Members of Friends are Jan Reynolds, President; Greta Betti, Treasurer, Julie Eutizzi, Secretary; Diane Carlson, Susan Cobb, Dee Ebertsch, Kathie Fayas, Bonnie Hyde, Darlene Orler, Ruth Reynolds and Jackie Rosen. Any questions concerning Friends affairs, call Jan at 774-5212.

## **VETERANS' FREE DAY**

Since 2012 the Foundation has hosted a free day for all veterans to visit the World War II Glider & Military Museum. Last year's event was held on Monday, July 24. This year Veteran's Free Day will be held on **Monday, July 24**, from 11:00 a.m. to 4:00 p.m. There will be no charge that day for veterans.

The Board of Governors does this as a small token of appreciation to our military men and women, honoring them for their service, remembering what they have sacrificed and any heroic deeds that may have been performed to keep our county safe and free.

## **OPEN HOUSE**

On Sunday, August 6, the Foundation hosted an open house from noon to 4 p.m. which was well-attended. As a special feature, ten uniformed members of the World War II Historical Reenactment Society from Green Bay, Wisconsin, representing C Company, 401<sup>st</sup> Glider Infantry Regiment, 101<sup>st</sup> Airborne Division, pitched their tents near the World War II Glider & Military Museum on Saturday and displayed their equipment for visitors during Sunday's Open House. They will return for the 2018 open house in August.



On Sunday, August 6, 2017, the Foundation hosted an open house from noon to 4 p.m. which was well-attended. As a special feature, ten uniformed members of the World War II Historical Reenactment Society from Green Bay, Wisconsin, representing C Company, 401<sup>st</sup> Glider Infantry Regiment, 101<sup>st</sup> Airborne Division, pitched their tents near the World War II Glider & Military Museum on Saturday and displayed their equipment for visitors during Sunday's Open House. They will return for the 2018 open house in August.

### NEW PUBLICATIONS

Four new publications will be available at the museum gift shop beginning this season. All proceeds go to the Menominee Range Historical Foundation.

The first, *Kingsford Fuel: The Burning History of the Charcoal Briquette* by Guy Forstrom, tells the story of the development of the charcoal briquette. The 16-page booklet with full-color cover contains 20 photographs and illustrations focusing on charcoal briquette production at Iron Mountain's Ford Motor Company Plant in Kingsford from Guy Forstrom's personal collection

and the museum collection. The price is \$3.50 plus tax. Postage is extra.

The second, *Willie Dickinson Is Missing! The Unsolved 1881 Kidnapping of 5-Year-Old Mining Superintendent's Son in Commonwealth, Wisconsin* by William J. Cummings, tells the tragic tale of Willie Dickinson's disappearance while walking home from school on November 1, 1881. Willie was never found, despite a nationwide manhunt, the second such search in the history of United States. The 32-page spiral bound booklet with full-color cover contains 10 photographs and illustrations. Excerpts from contemporary newspaper accounts from 1881 through 1925 are

## MENOMINEE RANGE HISTORICAL FOUNDATION NEWS – SPRING 2018

[www.menomineerangehistoricalfoundation.org](http://www.menomineerangehistoricalfoundation.org)

included, as well as much Dickinson family history. The price is \$7.00 plus tax. Postage is extra.

The third, *Sgt. Oscar Godfrey Johnson, Jr.: World War II Medal of Honor Recipient from Dickinson County, Michigan* by William J. Cummings tells of PFC Oscar Godfrey Johnson's heroism in practically single-handedly holding his position at his unit's left flank in the offensive to break the German's Gothic Line from September 16-18, 1944, after all other members of his squad had been killed or wounded. The 46-page spiral bound booklet with full-color cover, inside cover and back cover contains over 20 photographs and illustrations, many concerning the Johnson family. The price is \$8.00 plus tax. Postage is extra.

The fourth, *The Prohibition Era on the Eastern Menominee Iron Range: A Compilation of Contemporary Local Newspaper Articles Documenting Prohibition* by William J. Cummings recounts this colorful era during the Roaring Twenties. The 214-page spiral bound book with a full-color cover contains 32 historic photographs, principally of saloons during the pre-Prohibition era, as well as eight sheet music covers showing the country's reaction to Prohibition, and eight additional cartoons and posters of the era. The price is \$20.00 plus tax. Postage is extra.

### MENOMINEE RANGE MEMORIES

In the spring of 2015 an idea evolved regarding a column called "Menominee Range Memories" with a goal of sharing historical information over a wide variety of topics to preserve our heritage and allow all of us to learn more about those who explored, developed, lived, worked and worshipped here before us.

*The Daily News* graciously agreed to publish a synopsis of each column along with an historic photograph helping to tell the story which began in January 2016.

The full story – "the rest of the story" – with expanded information and additional photographs is available on the Dickinson County Library's website ([www.dcl-lib.org](http://www.dcl-lib.org)) under the Local History and Genealogy tab. The large format makes reading easy and the columns can be printed if a hard copy is desired. Foundation Historian Cummings researches and writes the column.

### DONATIONS

Without the generous monetary donations to the Foundation made throughout the year by individuals, through local grants and occasionally bequests in wills, the museums would not be able to operate. While our admissions have increased over the years, expenses have also risen.

Gifts of any size are much appreciated to allow the Foundation to maintain and enhance its facilities and displays.

### VOLUNTEERS NEEDED

Without volunteers it would be financially impossible for these museums to remain open. With each passing year finding people willing to devote hours at the museums becomes increasingly difficult. Your support and assistance is needed at the World War II Glider & Military Museum (4-hour shifts for morning or afternoon), the Cornish Pumping Engine & Mining Museum (4-hour shift Monday morning) and the Menominee Range Historical Museum (4-hour shifts Tuesday through Friday). Call Dianne at 828-1822 (archives) or 774-4276 (downtown museum) or 774-1086 (Cornish Pump museum) to volunteer.

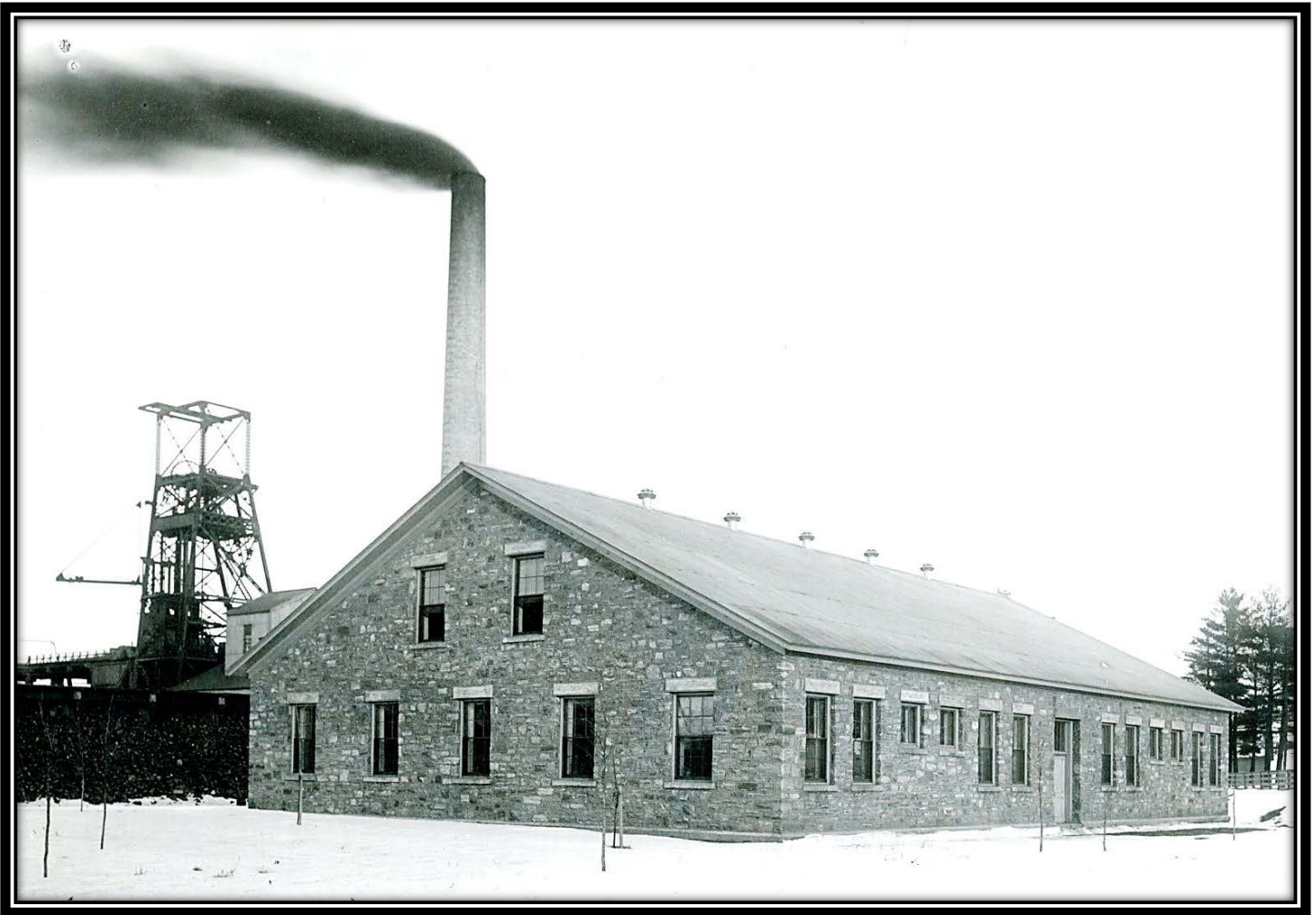
### THANKS FOR YOUR CONTINUED SUPPORT!

Our membership list is dwindling, so we are especially grateful for your continued support which is absolutely essential to successfully maintain our three seasonal facilities, open from June through mid-October. Basic maintenance and utility expenses continue throughout the year. Please encourage others to become members and support our museums.

If you need to renew your membership, a form is enclosed with this newsletter. Membership forms are also available on our website.

Any additional assistance you can provide to help us preserve our area's rich heritage is always appreciated.

*Menominee Range Historical Foundation  
Board of Governors*



Taken in December, 1911, this is the earliest photograph of the Chapin Mine’s “C” Ludington Shaft dry building, now housing the restrooms, manager’s office and archives on its gabled west end, shown here. The shaft housing, visible to the left of the dry building, rose 114 feet above the collar of the shaft. The pump house, just visible to the left of the dry roof, was sheathed in corrugated metal and rested on a red sandstone foundation next to the shaft, covering the Cornish pumping engine where it still stands today. The smokestack of the boiler house, located next to the pump house, was slightly higher than the shaft housing. [Menominee Range Historical Museum] The dry, an historic structure itself, is the large sandstone building across from the Cornish Pumping Engine & Mining Museum. Erected as the “locker room” for miners working from the C Ludington Shaft of the Chapin Mine in 1910, the 103’ by 65’ structure included 660 steel lockers, showers and other accommodations, and was constructed at a cost of \$12,000. It remains structurally sound.