

**MENOMINEE RANGE HISTORICAL FOUNDATION MUSEUM
CORNISH PUMPING ENGINE & MINING MUSEUM
WWII GLIDER & MILITARY MUSEUM
WINTER NEWSLETTER
DECEMBER 2020**

Dear Museum Friends,

The Menominee Range Historical Foundation Board of Governors wishes you and your family a blessed holiday season and a healthy and peaceful New Year. Continuing support and donations from our faithful members, year after year, has been especially welcome during the Covid-19 Pandemic which resulted in all three museums remaining closed throughout the year. However, the Foundation has moved forward, planning to reopen after Memorial Day in 2021.

ACCOMPLISHMENTS IN 2020 AND PLANS FOR 2021



As workmen began to dig the footings for the cement handicapped ramp emergency exit on the east side of the dry building in the fall of 2019, water was encountered. The trench filled to the top overnight. Coleman Engineering provided a solution which was addressed this summer, routing the excess water to the sewer system. The cement handicapped ramp emergency shown here was constructed. The total cost of this project, including rectifying the unanticipated water problem, was \$35,596.

At the “Dry Museum Project” – Phase

3: Under the leadership of Foundation Vice President Jim Hartwell drywall was installed on the exterior walls of new museum. Refinements of the layout and professional architectural drawings of the proposed museum were completed by Coleman Engineering Company in early 2020. A copy of a portion of the floorplan appears on the following page.

In October a contract was signed with Carey Construction to rough in the the south room display area (33’ x 43’) and the north room display area (33’ x 43’) in preparation for the installation of electrical wiring and applying drywall. Carey Construction

anticipates beginning the project in early December 2020.

Continued stages of renovation with estimated costs include: south room display area (33’ x 43’), \$85,000; north room display area (33’ x 43’), \$85,000; electrical wiring, \$5,000; three gas heaters at \$5,000 each, \$15,000; hallway ceilings, \$15,000; main entry area ceiling, \$19,000; tape and paint main entry area, \$4,000; 25 4’ x 4’ wall display cabinets at \$175 each, \$3,750; three special larger wall display cabinets at \$400 each, \$1,200; insulate ceilings with 12-inch deep insulation bats, \$5,000; plate glass for all displays, \$4,500. The estimated total of these projects is \$242,000.



The “Dry Museum Project” continues in this historic 109-year-old structure. Phase 2 in 2019 included the construction of 194.5 lineal feet of the outside perimeter walls around the display area which measures 77’9 ½” x 59’3”. Styrofoam insulation with a vapor barrier was attached to the back of the 2” x 4” walls which were affixed to the original sandstone walls. Then fiberglass insulation was installed between the studs for further protection and warmth. Blocking was also installed for the wall display cabinets each measuring about 4-feet square which will be located along the south wall east of the garage door and the full length of the east wall shown here to support display cases. Windows and the main entrance on the north wall will help light the schoolroom on the northwest corner of the museum.

FILE NAME: C:\WORK\ASSEMBLY\HISTORICAL MUSEUMS\20020523.DWG

DATE PLOT: 5/14/2013 8:58 AM

PROJECT: MUSEUM RENOVATION

FLOOR PLAN
SCALE: 1/8" = 1'-0"

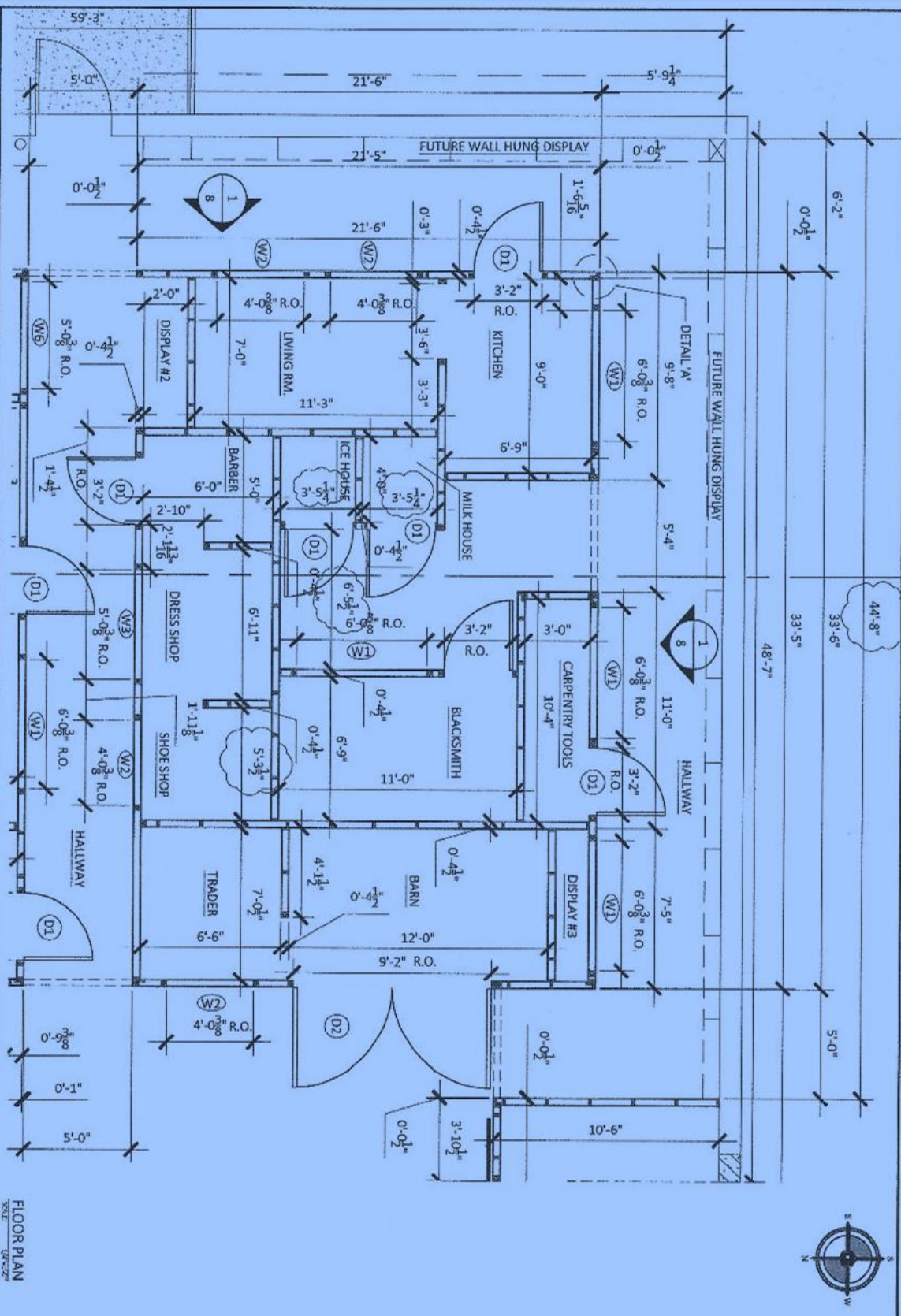
2

DESIGNED BY	DATE	PROJECT
CLC	5/14/20	SAN

200205-BUILDING
MENOMINEE RANGE
HISTORICAL MUSEUMS

FLOOR PLAN

COLEMAN ENGINEERING COMPANY
125 SOUTH MAIN STREET • SUITE 200 • MENOMINEE, WI 54751-1018
PHONE: 920-734-7400 • FAX: 920-734-7401





Jim Hartwell put some finishing touches on the front of the Cracker Barrel General Store, applying trim painted green and a cedar shake roof, pictured above. Jim also constructed shelving which will be used to display items typically found in a general store in the late nineteenth and early twentieth centuries. Antique counters and display cases, scales, a coffee grinder, potbellied stove, crank wall telephone, butcher's meat rack and butcher's block will be moved to this location from the Cracker Barrel General Store in the downtown museum when the museum relocates to the dry building.

The next phase in the "Dry Museum Project" will be to install wiring and then apply sheetrock to the newly-constructed framework.

Treasurer Guy Forstrom spent some time late this fall grading around the dry building and improving the parking area in front of the

building and in the parking area across the street. A number of loads of topsoil which will be spread around the building in the spring were purchased.

Progress continues on this project due to a number of generous donations toward the new home for the historical museum.

Hartwell also installed a ceiling which looks like the old-fashioned tin ceilings found in many early stores and is pictured on the following page. Hartwell also constructed two LED-lighted cases which will house the Museum's collection of rifles and pistols, one on the left exterior side of the general store and the other on the wall adjoining the store front to the right, also pictured on the following page.



address the heat build-up in the uninsulated metal Mining Museum attached to the Cornish Pumping Engine Museum as temperatures can built up to 100 degrees on some summer days.



At the Cornish Pumping Engine & Mining Museum: During the summer of 2019 Vice-President Jim Hartwell installed vents on the north and south walls to help



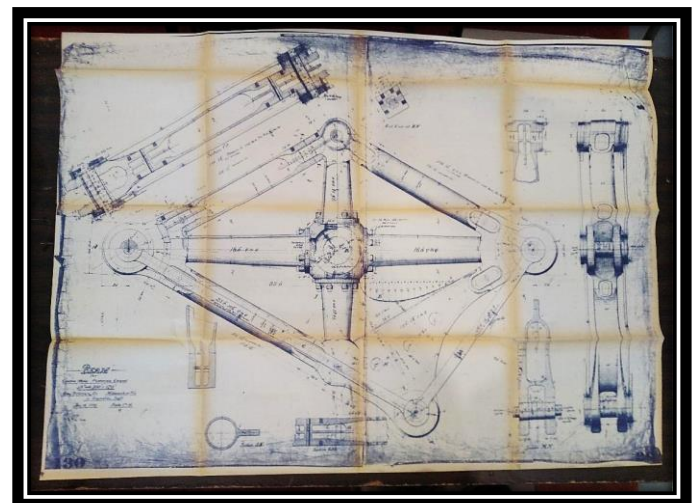
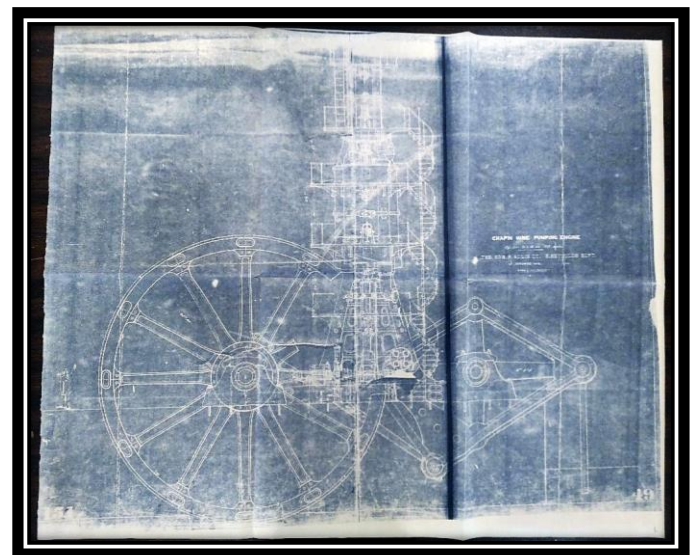
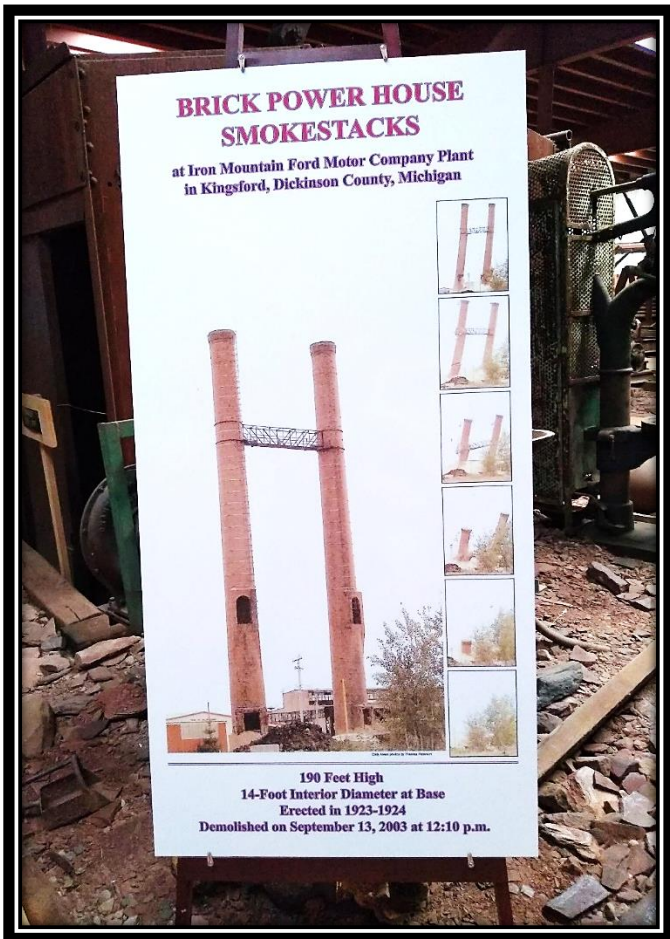
In late summer Hartwell uncovered a garage door in the Mining Museum and installed a large, removable screen which will hopefully further address the heat problem.

Modifications were made to a portion of the Iron Mountain Ford Motor Company

exhibit which occupied the wall covering the garage door by moving some of the photographs previously located there to another adjoining wall.

A display featuring logging, lumbering and area sawmills will occupy the space previously used as an audio-visual room in the Mining Museum which hopefully will be ready for the 2021 season if funding is available.

In early February Ernie Darrow, chief engineer of the New England Wireless and Steam Museum, contacted the Foundation telling us their collection contained the original blueprints of the Chapin Mine Engine (Cornish Pumping Engine). Their museum is an electrical and mechanical engineering museum founded in 1964 and consists of five buildings located in East Greenwich, Rhode Island. Their board voted to donate 52 sheets of prints of the original Chapin Mine Engine 52 to our museum at their February 5 board meeting. They want to get them digitized and will be reimbursed for the digitizing and shipping. This is an amazing addition to our mining collection.



Baker Sign Company fabricated a photographic record of the demolition of the Iron Mountain Ford Motor Company Plant's brick power house smokestacks to further enhance the Ford display. Friends of the Museum assisted in funding the sign and Jim Hartwell built the easel for display. The smokestacks went down on September 13, 2003.

At the WWII Glider & Military Museum: This fully-restored Benzol Ford Motor Company gasoline pump used at the Iron Mountain Ford Motor Company Plant in Kingsford was added to the gas station display in the museum, a gift of Jim Rocconi.



At the Menominee Range Historical Museum: A committee from the Foundation Board continues to make plans for the eventual moving of exhibits into the new museum at the dry.

Promotional Committee Activities: The core Promotional Committee formed in 2018 consists of Mikki Hall, chairperson, Seth Anderson and Lucy Joyce, Ashley Ellis, Mick Gayan, Keith and Jayna Huotari, Michael Johns and Kasey Webber.

Through their efforts considerable work has been done on social media to make it easier to connect with the Foundation's website (menomineemuseum.com).

Virtual tours of the Menominee Range Historical Museum and the World War II Glider & Military Museum are available on the webpage (menomineemuseum.com).

A series called "Notable and Remarkable People on the Menominee Range" is now available on the Foundation webpage under the blog tab.

James "Jimmy" Tays (March 10, 1899-June 1986) was born in Iron Mountain. His paternal grandfather was born a slave in Virginia in about 1829. Jimmy's father died of heart disease and Jimmy and his mother moved to Illinois where they both worked as servants in a boarding house. His mother remarried and Jimmy began attending high school, excelling in sports. He played football in college and went on to become one of the few men of African American descent to play for the National Football League prior to their policy of integration in 1946. He also played baseball for the Chicago White Sox. (Kasey Webber, August 25, 2020)

Mary Frances "Minnie" (Flaherty) Kingsford (December 5, 1865-May 8, 1943) was a daughter of Robert and Nancy Ann (Ford) Flaherty. Nancy Ann was a sister to William Ford, father of Henry Ford. Thus, Minnie and Henry were first cousins. Minnie married Edward George Kingsford, a timber cruiser and dealer in land and timber, on April 9, 1890. Minnie, a charter member of the Tuesday Study Club and the first president of the Iron Mountain Women's Club, was active in community affairs. (Mikki Hall, August 26, 2020)

Captain John Wicks (November 29, 1820-October 1908) was born in Cornwall, England, and arrived in Ontonagon in Michigan's Upper Peninsula on October 16, 1852, serving as mining captain at the Minnesota Mine for the next twelve years. In 1866 he accepted the superintendency of the

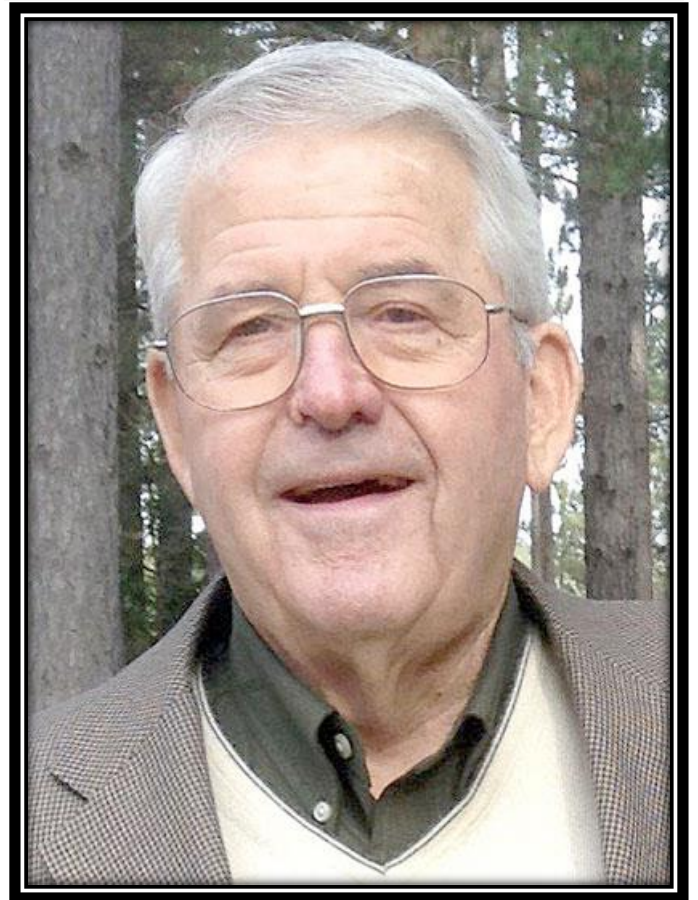
Ophir Canon Mine in Nevada. Captain Wicks came to Iron Mountain in 1879 and on July 5 of that year, together with seven men from the Menominee Iron Mining Company set out from Quinnesec to explore the site of what became the Chapin Mine in Iron Mountain. (Mick Gayan, September 14, 2020)

John Lane Buell (October 12, 1835-January 30, 1917) was an early explorer of the Menominee Iron Range and the founder of Quinnesec which he platted in 1876. After serving in the army during the Civil War, Buell arrived in Menominee, Michigan, in 1867 where he operated a mill, engaged in general farming and published the *Menominee Journal*. Buell first visited the Menominee range in 1871, and in May 1873 discovered the Quinnesec Mine. Buell began publishing *The Menominee Range* at Quinnesec on March 19, 1879. Buell's two-story brick opera house opened December 30, 1879. (Keith Huotari, September 21, 2020)

Robert Joseph Flaherty (February 16, 1884-July 23, 1951), son of Robert and Susan Flaherty, was born in Iron Mountain, and is considered a pioneer of documentary film making. When Robert was 13 his family moved northwest to Ontario, Canada, where he accompanied his father, a mining engineer, on prospecting expeditions across Northern Canada. Prospecting in the southeastern Hudson Bay region in 1913, his employer suggested Flaherty bring a motion picture camera along, and his career path took a different direction. Intrigued by the life of the Inuit people situated in and around the Belcher Islands, he was determined to make a film featuring the Inuits he befriended during his expeditions. Securing funds from Revillon Frères,

a French fur trade company, Flaherty made "Nanook of the North" (1922), considered one of the first documentary-style films. Other films followed, including "Moana" (1926), set in Samoa, and "Man of Aran" (1936), set in the Aran Islands of Western Ireland. (Seth Anderson, November 6, 2020)

Passing of Joe E. Warren, past president of the Menominee Range Historical Foundation: On April 23, 2020, Joe E. Warren passed away after a courageous battle with cancer.



Joe E. Warren

Joe served as a trustee on the Foundation Board beginning September 19, 2008 until his death. He served as vice-president from May 6, 2011 through March 15, 2013 when

he became president. He resigned as president due to ill health January 19, 2018, continuing to serve as a trustee.

Joe and his twin brother Gene A. Warren were born June 17, 1935 in Prescott, Arizona, sons of the late Eugene H. and Josephine A. (Negro) Warren. Joe graduated from Iron Mountain High School in 1953 and went on to earn a bachelor's degree in civil engineering from the Michigan College of Mining & Technology in Houghton (Michigan Tech University) where he was a member of the Kappa Delta Psi fraternity.

Following his graduation from college, Joe served his country in the United States Air Force and was honorably discharged as a captain in 1958. He married Sharon Bevilacqua on April 26, 1958 at the Immaculate Conception Catholic Church in Iron Mountain.

Joe took a position with R.G. Joiner Company in 1960 and served as vice president until 1985 when he acquired the company. Joe continued to operate the company as president until his retirement in 1996.

Joe was an avid outdoorsman and enjoyed hunting, fishing, boating and cutting firewood. He frequently took ATV rides through the neighborhood to keep an eye on things as he was known by many as "The Mayor" of Harding Park Drive. Most of all, Joe loved spending time with his family. He will be deeply missed by all who knew him.

Generous memorial donations from Joe's family and friends have helped the Foundation move forward in developing the Dry Museum Project.

Members of the Menominee Range Historical Foundation Board of Directors: Bill Cummings, president and historian; Jim Hartwell, vice-president; Mikki Hall, secretary and Promotions Committee

chairwoman; Guy Forstrom, treasurer; Pam Edens, Kathie Fayas, Keith Huotari, Bob Johnson, Dave Pelto, Jan Reynolds and Roger Scott, trustees.

Keith "Hoots" Huotari filled Joe E. Warren's trustee position beginning June 5, 2020.

Kathie Fayas, the longest-serving Board member, was secretary from September 11, 1975 until June 5, 2020, and continues as a trustee. She was succeeded by Mikki Hall, who first became a Board member April 20, 2018.

Museum Manager Dianne Castelaz-Chiapusio: Beginning her twenty-eighth year, Dianne continues to serve as museum manager, faithfully and capably undertaking a wide range of responsibilities.

Volunteers Keep the Museums Open: Volunteers are crucial to our museums, for without them the Board could not afford to staff the three sites and operate for the number of hours open during the season.

Obviously, with the museums closed due to the Covid Pandemic, volunteers were not present this season, but will be welcomed to serve again during the 2021 season.

Friends of the Museum Raise Funds for Numerous Projects: The Friends of the Museum group continues to offer financial support to all three museums. Due to the coronavirus no activities were able to be undertaken this year.

Members include Janet Reynolds, president/treasurer; Greta Betti, vice-president; Julie Eutizzi, secretary; Diane Carlson, Susan Cobb, Kathie Fayas, Darlene Orlor, Jackie Rosen and Kay Villa.

"Menominee Range Memories" Columns Promote Area History and Raise Awareness of Our Heritage: Foundation Historian Bill Cummings began writing a series of articles called "Menominee Range

Memories” in December, 2015 to share historical information over a wide variety of topics to help preserve our heritage and allow all of us to learn more about those who explored, developed, lived, worked and worshipped here over the decades. *The Daily News* publishes these articles along with historic photographs helping to tell the story.

The expanded story – “the rest of the story” – with additional photographs and other illustrations for all columns is available on the Dickinson County Library’s website (www.dcl-lib.org) under the Local History and Genealogy tab where it can be read and/or printed by the reader if a hard copy is desired. There are currently 58 articles available with more being added on a regular basis.

Also available on the Local History and Genealogy tab are 16 Power Point presentations showing various aspects of local history through photographs and information. Another section contains a large collection of captioned historic photographs.

These files are available at no cost and help provide insight into the rich heritage of the Menominee Iron Range which the Menominee Range Historical Foundation promotes. They make for great reading at any time, especially in the approaching winter months when weather and the coronavirus limit some activities.

Funding Needs: The Foundation again needs your help in realizing its 2021 museum goals. Your continued support is most appreciated, especially due to the museums being closed for this season, drastically reducing revenues.

Please help us to encourage others to become members and support our museums. A membership form is included for your consideration and is also available on our website, noted at the bottom of this page.

Annual donations come from individuals, businesses, anonymous benefactors, the Iron Mountain-Kingsford Women’s Club, TADCA, the First National Bank & Trust, the Red Oak Foundation and WE Matching Funds. A number of generous grants have also been received from the Dickinson Area Community Foundation and the Henry Family Foundation.

The Menominee Range Historical Foundation is funded only through admission fees, gift shop sales, memberships, donations, bequests and occasionally grants. No tax dollars from city, county, state or national sources are received.

Donations of any size are always very much appreciated. Make your check out to “Museums,” P.O. Box 237, Iron Mountain, MI 49801. Please call trustee Kathie Fayas at (906) 774-2827 with any questions.

**SEASONS GREETINGS FROM
THE MENOMINEE RANGE HISTORICAL FOUNDATION
BOARD OF GOVERNORS**

VISIT US AT: menomineemuseum.com



MENOMINEE RANGE HISTORICAL FOUNDATION

MEMBERSHIP FORM

The Menominee Range Historical Foundation and its three museums – Menominee Range Historical Museum, Cornish Pumping Engine & Mining Museum, World War II Glider & Military Museum – is a 501(c) 3 organization dependent upon donations, grants, membership dues and earned income to provide its annual operating costs. Individuals and groups help support the Foundation as follows:

- **Annual Membership for All Three Museums** (\$20 single/couple or \$25 for family, including children living at home to age 18): Members just need to give name at the front desk of the museum for admission.
- **Life Membership** (\$100): Dues provide admission for life and a 1” x 3” brass plaque of up to three short lines of copy installed at the **Cornish Pumping Engine & Mining Museum**. The plaque may include the name and city and state of the life member.
- **Memorial** (\$50): \$50 is required for the initial plaque set-up. Additional names may be added as other memorial donations are received. The plaque may include “In Memory of _____, City and State, by (donor’s name).” The plaques are installed at the **Cornish Pumping Engine & Mining Museum**.
- **Glider/Military Museum Memorial Plaque** (\$50): Plaque installed at the **World War II Glider & Military Museum** with text up to 7 short lines, and installed in the **General Section** (may include name of person honored, reason honored, name of donor) or **Special Military Section** (may include name, war, rank, where served, medals, etc.) Call Kathie Fayas at (906) 774-2827 for additional information.
- **Founders’ Club** (\$1,000): Dues paid for life, bronze 2” x 8” plaque installed at the **Menominee Range Historical Museum**. Only interest from these donations may be used to perpetuate the museums. Plaque inscription may hold up to five short lines of information (may include name, city and state, and additional information).
- **Heritage Club** (\$1,000): Dues paid for life, bronze 2” x 8” plaque installed at the **Cornish Pumping Engine & Mining Museum Gift Shop**. These funds may be used in total for maintenance of the museums. Plaque inscription may hold up to five short lines of information (may include name, city and state, and additional information).
- **General Donation for the Dry Museum Project (new home for Menominee Range Historical Museum) (amount donated):** \$_____
- **General Donation for General Maintenance of Historical/Cornish Pump Museums (amount donated):** \$_____
- **General Donation for General Maintenance of World War II Glider & Military Museum (amount donated):** \$_____

Please circle the appropriate item and send a check payable to the Menominee Range Historical Foundation, P.O. Box 237, Iron Mountain, MI 49801. For additional information or assistance call (906) 828-1822 or (906) 774-2827. **Thank you for your support to help preserve our heritage.**

Name _____

Address _____

City _____ State _____ Zip Code _____

Phone _____ E-mail _____

____ Will save Super One/Econo Foods grocery slips – leave at either museum or call (906) 828-1822

____ Would like to volunteer at museums – call (906) 828-1822

____ Would like to donate to the Perpetuation Fund in my trust or will – call Kathie Fayas at 774-2827

Menominee Range Historical Foundation
P.O. Box 237
Iron Mountain, MI 49801



This winter scene shows the Halvar Person/Louis M. Hansen Livery Stable, 621-623 South Stephenson Avenue in about 1910-1915, located on the southeast corner of South Stephenson Avenue and East C Street where B's Cafe is located. [Menominee Range Historical Museum]